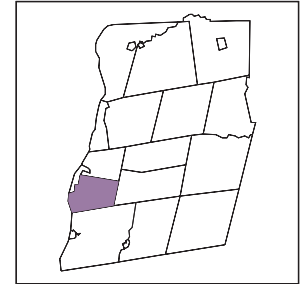
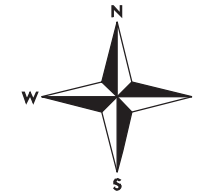


Toxics Targeting Selected Toxic Sites for the TOWN OF EAST GREENBUSH

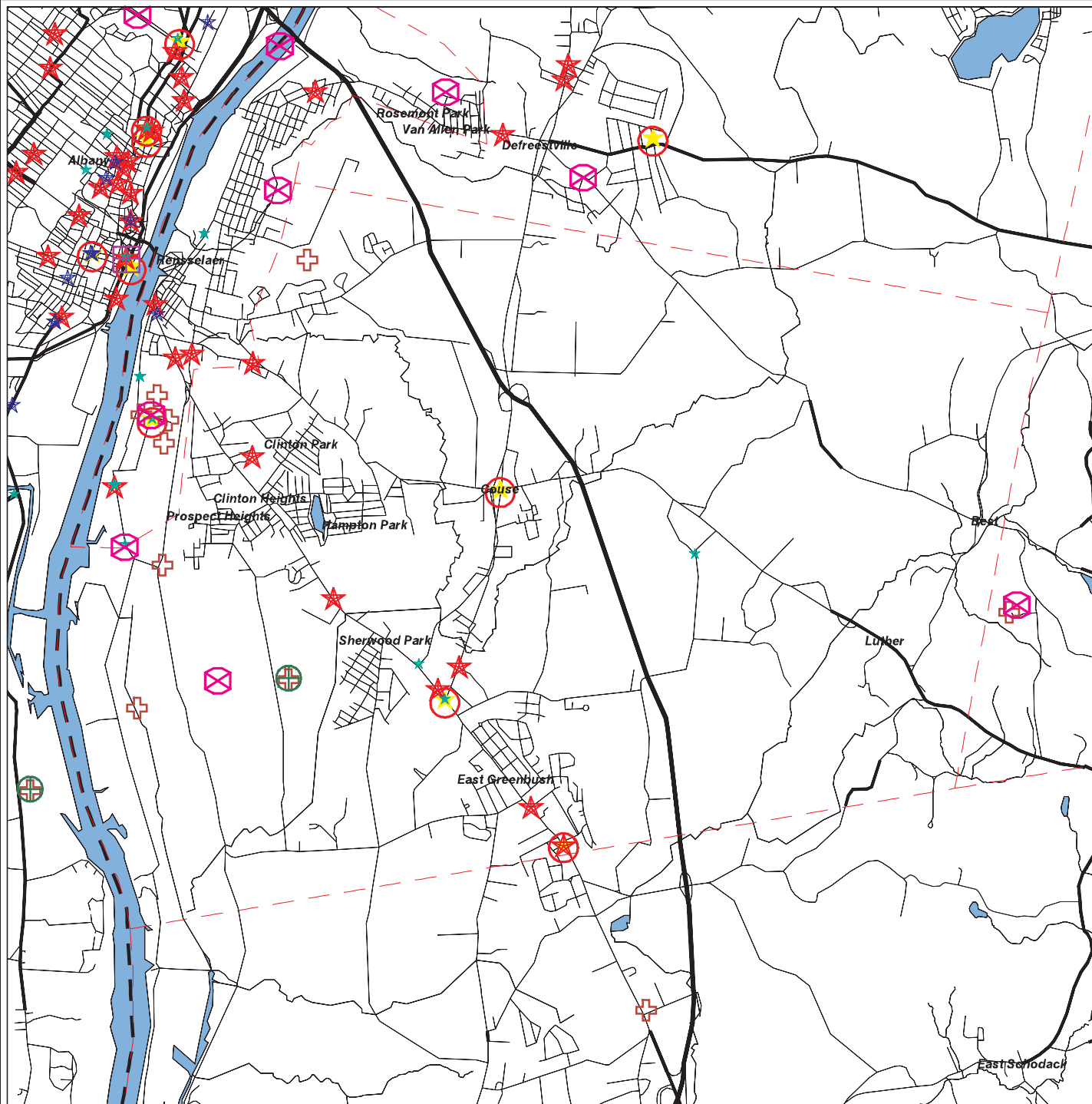
www.toxicstargeting.com

(800) 2TOXICS

February 28, 2002



Rensselaer County



- NPL/CERCLIS/NYSDEC Inactive Hazardous Waste Disposal Site
- Hazardous Substance Site
- Solid Waste Site
- Hazardous Waste Treatment, Storage or Disposal Site
- MTBE Spill that does not meet cleanup standards
- Tank Failure that does not meet cleanup standards
- Tank Test Failure that does not meet cleanup standards
- Spill greater than or equal to 100 units that does not meet cleanup standards

- Waterbody
- Minor Roads
- Major Roads
- Expressways
- Municipal Boundary
- County Border
- Railroad Tracks

Scale: 1 inch = 5315 feet (1.01 miles)