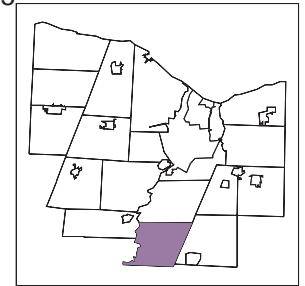
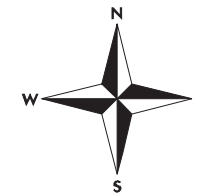


# Toxics Targeting Selected Toxic Sites for the TOWN OF RUSH

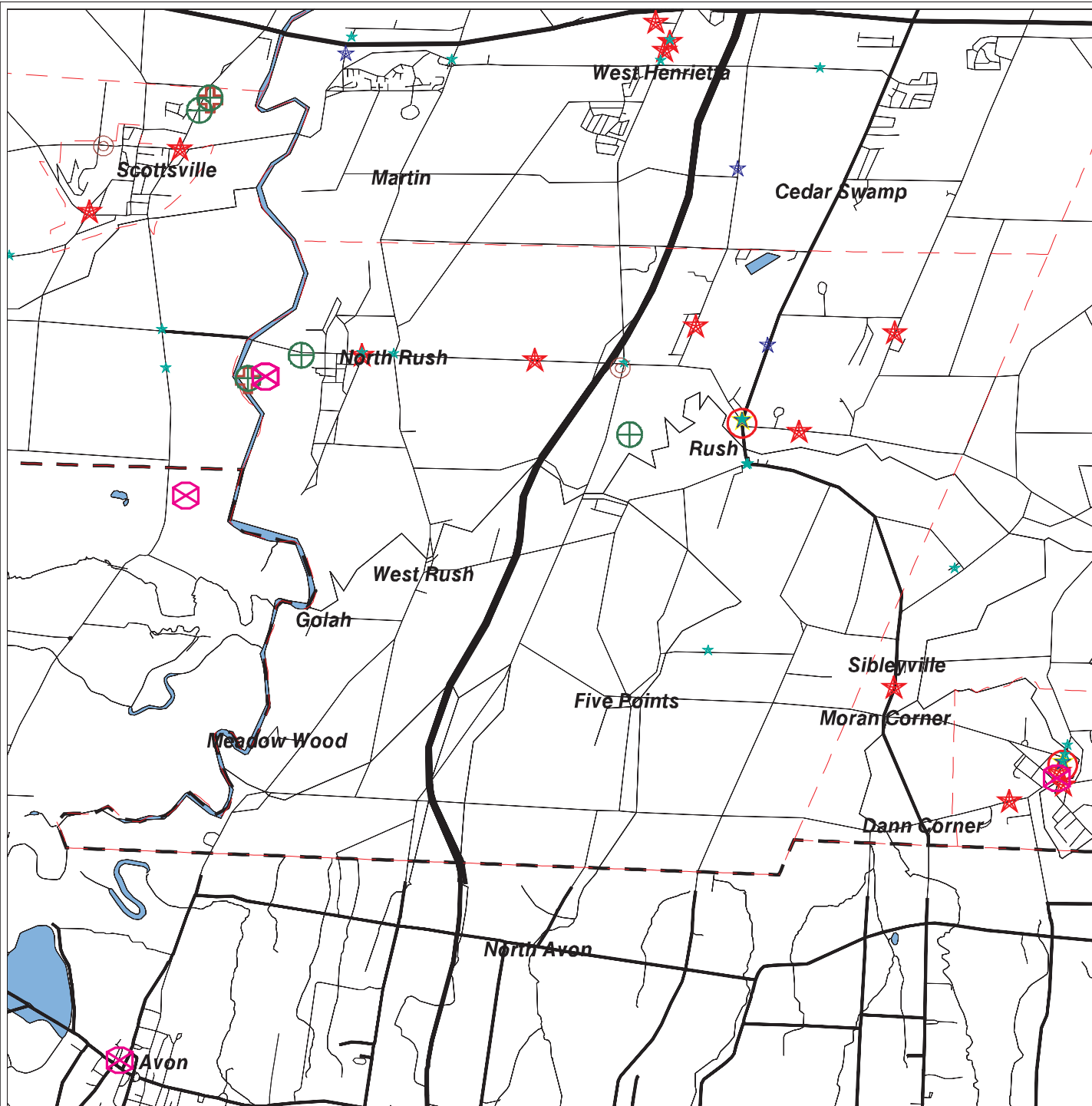
www.toxicstargeting.com

(800) 2TOXICS

September 29, 2005



Monroe County



- NPL, CERCLIS, and/or NYSDEC Inactive Hazardous Waste Disposal Registry Site
- NYSDEC Inactive Hazardous Waste Disposal Registry Qualifying Investigation
- Hazardous Substance Site
- Solid Waste Site
- Hazardous Waste Treatment, Storage or Disposal Site
- Brownfields Site
- MTBE Spill that does not meet cleanup standards
- Tank Failure that does not meet cleanup standards
- Tank Test Failure that does not meet cleanup standards
- Spill greater than or equal to 50 units that does not meet cleanup standards

- Municipal Boundary
- County Border
- Waterbody
- Railroad Tracks

Please Note: This map is subject to Toxics Targeting's Liability Disclaimer. Data may include sites delisted by regulatory authorities.

Scale: 1 inch = 6733 feet (1.28 miles)